



NINA LEONETTO
—COSMETICOS—





Nina Plex is not only
the insurance policy against lifeless
tresses, brittle and hair breakage but
also an innovative reconstructive
treatment that prevents damage that
occurs during chemical services.

A close-up portrait of a woman with long, straight blonde hair and bright blue eyes. She is looking slightly to the left of the camera. The lighting is soft and natural, highlighting her skin and hair texture. The background is a plain, light color.

PROTECTION

Nina plex is a brilliant product that protects hair bonds as well as hair shaft, prevents damage caused by the lighting, High lifting, coloration process or any chemical services before it even starts, Nina plex works to shield hair from chemical harm, penetrates deeply into hair's cortex.

Nina plex protects, give strength and elasticity, and increases flexibility and manageability.



The Active

Ingredients

The active ingredients in Nina plex is a compound called Aqua, Disodium EDTA, Fragrance, Glycerin, Cetrimonium Chloride, Methylpropanediol, Aspartic Acid, Serine, Arginine, Glycine, proline, Alanine, Lysine, Glutamic Acid, Aspartic Acid, Threonine, Creatine, DMDM Hydantoin, Phenoxyethanol.

NINA PLEX

RECONSTRUTOR



Nina plex with its formula work to turn hair from dull to fine, restores the hair, creates bonds within the hair fiber and permanently rebuilds the strength, structure and integrity of your hair also **reconnect broken disulfide sulfur bonds** that are damaged during the chemical process.

01 - Bond' Protector

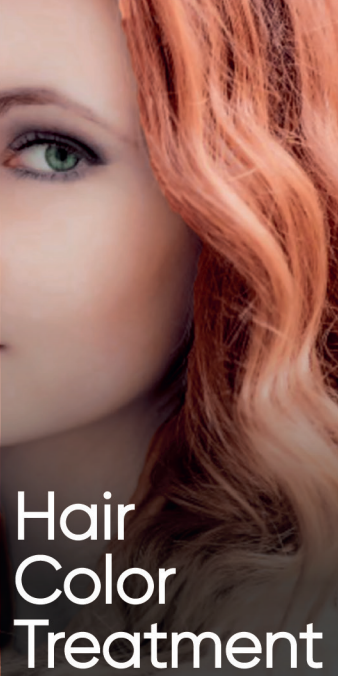
Works on all shades of blonde, highlighted or lifted hair and increases strength and velvety softness for brilliant blonde restores damaged cuticles for stronger hair. Keeps highlights bright and vibrant.

02 - Bond Filler

Works on preparing the hair fiber for bleaching process and during the bleaching process to protect the hair fiber and then to reconstruct the hair fiber.



Nina Plex is designated
for **all hair types** from virgin
to over-processed



Hair
Color
Treatment



Ultra Lift
Hair
Color



Perms



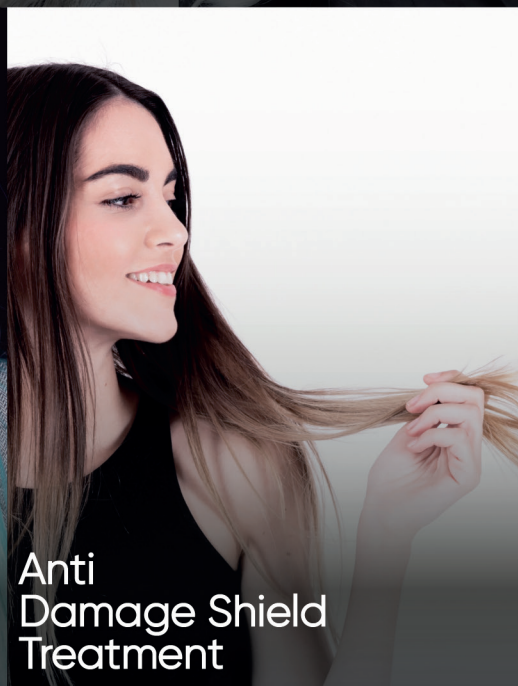
Bleaching
Service



Straighteners



Direct Colors



Anti
Damage Shield
Treatment



Hair Color Treatment

Disulfide bonds that make up the hair, are often damaged, fragmented, during the lighting, High lifting, coloration process or any chemical services Nina plex is working as a protective agent during chemical processes to prevent hair damage and creates, new hair bonds and repairs damaged ones.



Ultra Hair Color

To lighten hair means to need to break the bonds in hair strand. The lighter you go the more bonds are broken.

Nina plex is added to lightener to protect hair before any damage is done. It reconnects the bonds in hair that have been broken during the chemical services.



Perms

A perm is a procedure that breaks numerous bonds in the hair, Nina plex is working on creating new hair bonds and repairs damaged ones.



Bleaching Service

The bleaching process will directly affect the disulfide bond, leaving it too fragile so using Nina plex will protect and repair broken bonds, and keeps the hair healthy and strong.

Straighteners

Reconnects broken bonds and repairs the damage to hair making an artificial, extended disulfide bridge, tames frizz and makes hair shinier, smoother, and more manageable.





Direct Color

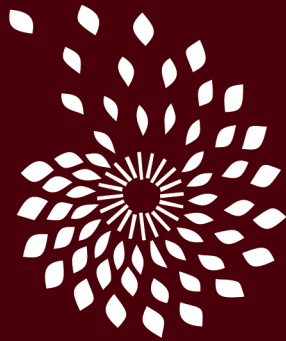
Creates new bonds within the hair fiber,
Leaves your hair amazingly smooth and
soft, with an incredible, supple and full of
shine.



Anti Damage Shield Treatment

Nina plex is a reconstructive treatment that improves the internal structure of the hair, prevent and Protects the hair from damage during the chemical process, prevent the hair shaft from fracturing.

Nina plex increases hair elasticity and enables hair to accept all chemical treatments with no damage.



NINA LEONETTO
COSMETICOS